

# Keystone Arch Bridges

## KAB Trail



# Railroad to the Moon

**“Along [the length of the West Branch of the Westfield River] sit the first keystone arch railroad bridges built in America. They are wholly dry laid, range in height to 70 feet and made possible the longest and highest railroad in the world, the Western Railroad, in 1840.”**

- *<https://keystonearches.com/History.htm>*

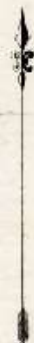
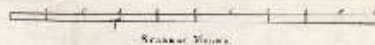
# Western Rail-Road Corporation 1833





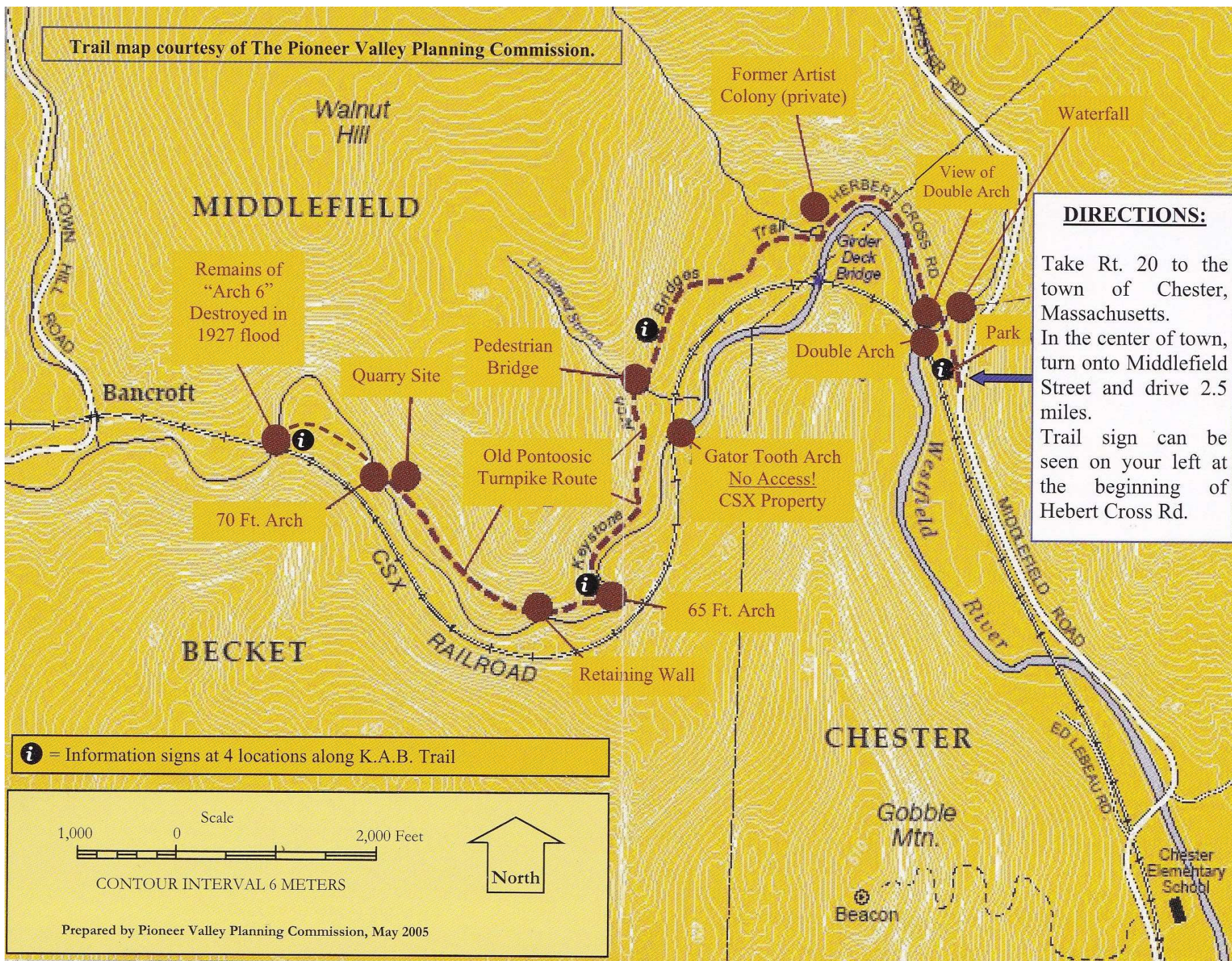
**ROUTE**  
OF THE  
**WESTERN RAIL ROAD.**  
West of Connecticut River.  
1837.

*Enlarged from the Map of the State  
of 1835.*

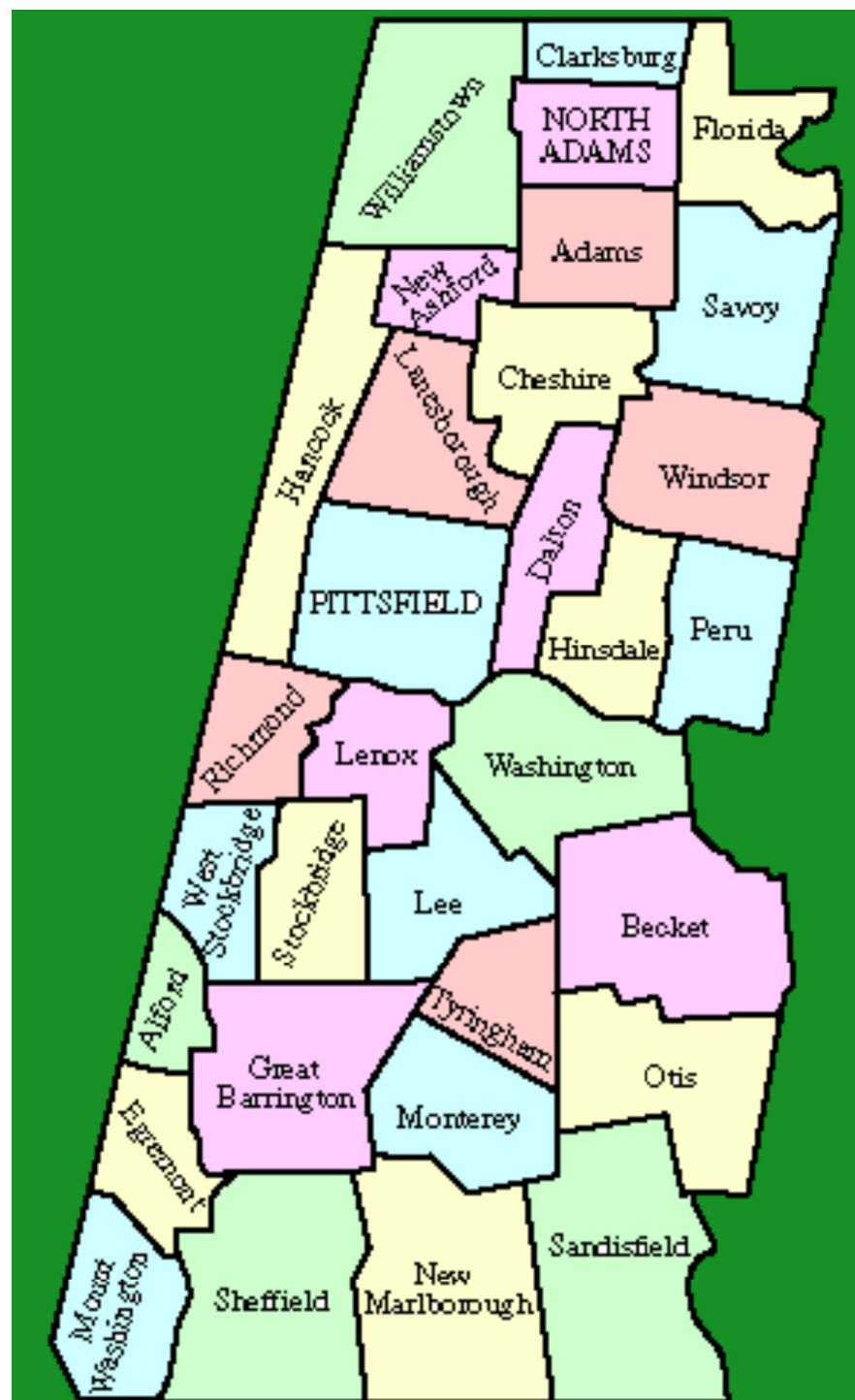




Trail map courtesy of The Pioneer Valley Planning Commission.







# The Railroad Era in the Berkshires

(from a document created by the Howard family of Interlaken;  
their daughter Marion was a classmate of mine in Plain School in Stockbridge in the 1950s)

## Railroads

The development of the railroads had a drastic effect on transportation and industry in Berkshire. As a reference in the discussion of this effect we are listing here the relevant railways and the dates of their opening:

- 1838 - The Hudson and Berkshire Railway. From Hudson, N.Y. to West Stockbridge.
- 1841 - The Great Western Railway. From Worcester to West Stockbridge through Pittsfield, connecting with the Boston and Worcester Railway.
- 1843 - The Housatonic Railway. From Bridgeport, Connecticut, to Canaan, Connecticut. It was soon extended to Falls Village, joining the Berkshire Railway.
- 1844 - The Berkshire Railway - From West Stockbridge through Great Barrington to Falls Village. The Berkshire Railway was not a financial success and its lines were leased to the Housatonic Railway. The route from New York to Albany was now: by boat to Bridgeport, by the Housatonic Railway, the Berkshire Railway, the Hudson and Berkshire Railway to Hudson, N.Y., and by boat to Albany. The route from the east was by the Great Western Railway and the Hudson and Berkshire Railway to Hudson.



## Railroads Revolutionize Industry

Date? - The Albany and West Stockbridge Railway. This was completed sometime later and provided a direct route to Albany.

1847 - The Pittsfield and Adams Railway. Adams included North Adams.

1848 - The New Haven and Hartford Railway completed its line from Bridgeport to New York City. There was now direct rail connection between New York City, the Berkshires, and Albany.

1850 - The Stockbridge and Pittsfield Railway connecting the Great Western Railway and the Pittsfield and Adams Railway with the Berkshire Railway at Vandeusenville.

1852 - The Harlem Line. This ran up the Harlem Valley to the Albany and West Stockbridge Railway near Chatham, New York. This provided a more direct route between New York City and Albany.

1859 - The Troy and Greenfield Railway was completed from Adams (North Adams) to Troy.

1875 - The Hoosac Tunnel, begun in 1855, opened, completing the Troy and Greenfield Railway connection to Greenfield.

Date? - Before the Great Western Railway through Pittsfield was built, a railway from Stockbridge to the west was started. The bridge abutments over the Housatonic River and the railway embankment west of Mohawk Lake in Glendale can be seen still.

“Rockwell arranged this “surprise” party for Miss Jones, of course. He posed the children in their seats and arranged the humble birthday gifts on the desk: an apple, an orange, a flower or two, and packages tied with string. I like the “Happy Birthday Jonesy” on the blackboard. Also the Rockwell details: an eraser and chalk dust on the floor indicate there was an eraser fight while waiting for the teacher to show up. The kid with the red shirt still has an eraser on his head.” <https://www.saturdayeveningpost.com/2011/08/rockwells-school-teachers/>

I'm the “kid with the red shirt” – the eraser was Norman's idea. Next to me is Marion Howard.



# Berkshire Towns Population, Area, Density

Sheet1																						
Town	First Occupied	Incorporated	1790	1800	1810	1820	1830	1840	Population		1860	1870	1880	2010	% change	Population Rank		Area Postal	Area 2010	Area		Density
									1850	1858						1858	2010			%	Rank	
Adams	1750	Oct 15, 1778	2,040	1,688	1,763	1,836	2,648	3,703	6,172	6,980	6,924	12,090	5,591	8,485	-54%	1	3	23.02	22.96	2.4%	20	369.56
Alford	1750	Feb 16, 1773	577	518	522	575	512	481	502	526	542	430	348	494	-19%	27	29	11.58	11.54	1.2%	32	42.81
Becket	1740	Jun 21, 1765	751	930	1,028	984	1,063	1,342	1,223	1,472	1,578	1,346	1,123	1,779	-17%	13	14	48.04	47.79	5.1%	4	37.23
Cheshire	1767	Mar 14, 1793	(a)	1,325	1,315	1,202	1,050	905	1,298	1,532	1,533	1,758	1,537	3,235	-13%	12	10	27.57	27.51	2.9%	14	117.59
Clarksburg	1769	Mar 2, 1798	(b)	253	231	274	315	370	384	424	420	686	724	1,702	6%	29	15	12.72	12.79	1.4%	31	133.07
Dalton	1755	Mar 30, 1784	554	859	779	824	827	1,255	1,020	1,064	1,079	1,252	2,052	6,756	64%	17	6	21.83	21.88	2.3%	22	308.78
Egremont	1730	Feb 13, 1760	759	759	790	866	890	1,038	1,013	992	1,079	931	875	1,225	-6%	19	20	18.91	18.52	2.0%	29	66.14
Florida	1783	Jun 15, 1805	(c)	(c)	392	825	454	441	561	612	645	1,322	459	752	-65%	26	25	24.71	24.59	2.6%	18	30.58
Great Barrington	1730	Jun 30, 1761	1,372	1,754	1,784	1,908	2,276	2,704	3,264	3,449	3,871	4,320	4,653	7,104	8%	4	5	45.86	45.78	4.8%	6	155.18
Hancock	1762	Jul 2, 1776	1,211	1,187	1,049	1,165	1,052	922	789	848	816	882	642	717	-27%	23	26	35.59	35.73	3.8%	11	20.07
Hinsdale	1762	Jun 21, 1804	(d)	(d)	822	822	780	955	1,253	1,361	1,511	1,695	1,595	2,032	-6%	14	12	21.66	21.70	2.3%	23	93.64
Lanesborough	1742	Jun 21, 1765	2,142	1,443	1,303	1,319	1,192	1,140	1,229	1,235	1,308	1,393	1,286	3,091	-8%	15	11	29.56	29.58	3.1%	13	104.50
Lee	1760	Oct 21, 1777	1,170	1,267	1,305	1,384	1,825	2,428	3,220	4,226	4,420	3,866	3,939	5,943	2%	3	7	27.11	27.02	2.9%	16	219.95
Lenox	1760	Feb 26, 1767	1,169	1,041	1,310	1,315	1,359	1,318	1,599	1,921	1,711	1,965	2,043	5,025	4%	8	8	21.58	21.67	2.3%	24	231.89
Monterey	(1739)	Apr 12, 1847	(e)	(e)	(e)	(e)	(e)	(e)	761	823	758	653	635	961	-3%	24	21	27.23	27.40	2.9%	15	35.07
Mount Washington	ca.1720	Jun 21, 1779	328	291	474	467	409	403	351	344	321	256	205	167	-20%	30	32	22.34	22.37	2.4%	21	7.47
New Ashford	1762	May 1, 1835	460	390	411	458	285	227	186	195	239	208	203	228	-2%	31	31	13.65	13.48	1.4%	30	16.91
New Marlborough	1736	Jun 15, 1759	1,550	2,068	1,979	1,668	1,656	1,682	1,847	1,647	1,782	1,855	1,876	1,509	1%	10	17	48.04	47.91	5.1%	3	31.50
North Adams	(1750)	Apr 16, 1878	(f)	(f)	(f)	(f)	(f)	(f)	(f)	(f)	(f)	(f)	10,191	13,708		(f)	2	20.70	20.61	2.2%	25	665.11
Otis	1750	Jun 13, 1810	(g)	(g)	1,111	981	1,012	1,177	1,224	1,018	998	960	785	1,612	-18%	18	16	37.90	38.03	4.0%	9	42.39
Peru	1762	Oct 16, 1806	(d)	(d)	912	748	729	576	519	487	499	455	403	847	-11%	28	24	26.10	26.03	2.8%	17	32.54
Pittsfield	1752	Apr 21, 1761	1,992	2,261	2,665	2,768	3,559	3,747	5,872	6,501	8,045	11,112	13,364	44,737	20%	2	1	42.43	42.47	4.5%	7	1053.38
Richmond	1760	Jun 21, 1765	1,255	1,044	1,041	922	844	1,097	907	970	914	1,091	1,124	1,475	3%	20	18	19.06	19.01	2.0%	26	77.59
Sandisfield	1750	Mar 6, 1762	1,745	1,637	1,648	1,648	1,655	1,464	1,649	1,615	1,585	1,482	1,107	915	-25%	11	22	52.98	52.98	5.6%	1	17.27
Savoy	1777	Feb 20, 1797	(c)	430	711	852	927	915	955	919	904	861	715	692	-17%	21	27	36.11	36.02	3.8%	10	19.21
Sheffield	1725	Jun 22, 1733	1,899	2,050	2,439	2,476	2,382	2,322	2,769	2,624	2,621	2,535	2,204	3,257	-13%	5	9	48.67	48.57	5.1%	2	67.06
Stockbridge	1735	Jun 22, 1739	1,336	1,261	1,372	1,377	1,580	1,992	1,941	2,058	2,136	2,003	2,357	1,947	18%	7	13	23.70	23.68	2.5%	19	82.22
Tyringham	1739	Mar 6, 1762	1,397	1,712	1,689	1,448	1,350	1,477	821	710	730	557	542	327	-3%	25	30	18.98	18.88	2.0%	27	17.32
Washington	1765	Apr 12, 1777	583	914	942	750	701	991	953	1,068	948	694	493	538	-29%	16	28	38.78	38.80	4.1%	8	13.87
West Stockbridge	1753	Feb 23, 1774	1,113	1,002	1,049	1,034	1,209	1,448	1,713	1,736	1,589	1,924	1,923	1,706	0%	9	19	18.61	18.68	2.0%	28	69.91
Williamstown	1753	Jun 21, 1765	1,820	2,086	1,843	2,010	2,134	2,153	2,626	2,529	2,611	3,559	3,394	7,354	-5%	6	4	46.86	46.89	5.0%	5	165.37
Windsor	1767	Jul 2, 1771	916	961	1,108	1,085	1,042	897	897	905	839	686	644	899	-6%	22	23	35.26	35.17	3.7%	12	25.56
Sums			28,139	31,131	35,787	35,991	37,717	41,565	49,518	52,791	54,956	64,827	69,032	131,219	6%	31	32	947.14	946.04	97.6%	32	138.70
														86,482					903.57			95.71
									MA					6,349,097	2.1%		actual	32		946.43		
																		MA	10,555			
																			9.0%			
(c) the gore	Florida	and Savoy	450																			
(d) Partridgefield		1771	1,041	1,361																		
(g) Bethlehem and Loudon		1779	261	488																		
		1773	344	614																		



# Becket Factoids 1884

- Population 1,123
- Polls 282
- Real Estate Valuation  
\$232,432  
= \$207 per capita
- Personal Property  
\$119,436  
= \$106 per capita

885



733



# Whistler's Parents

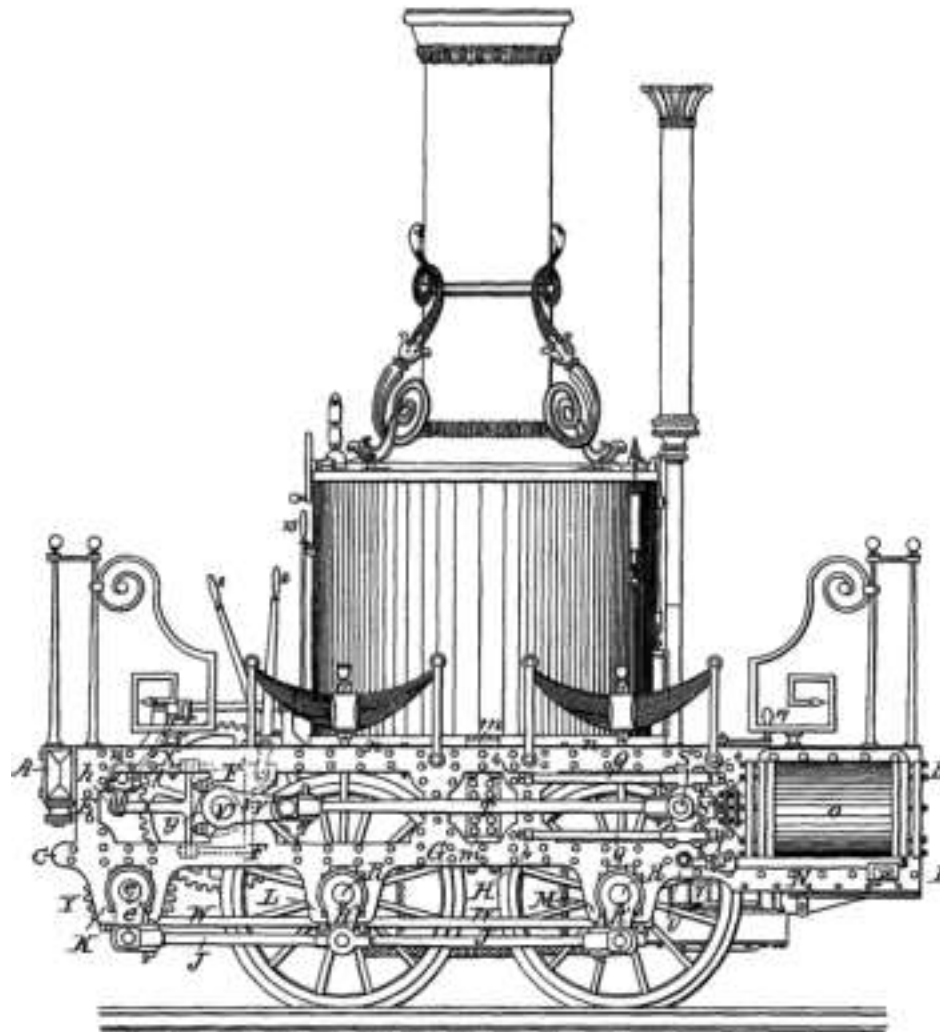




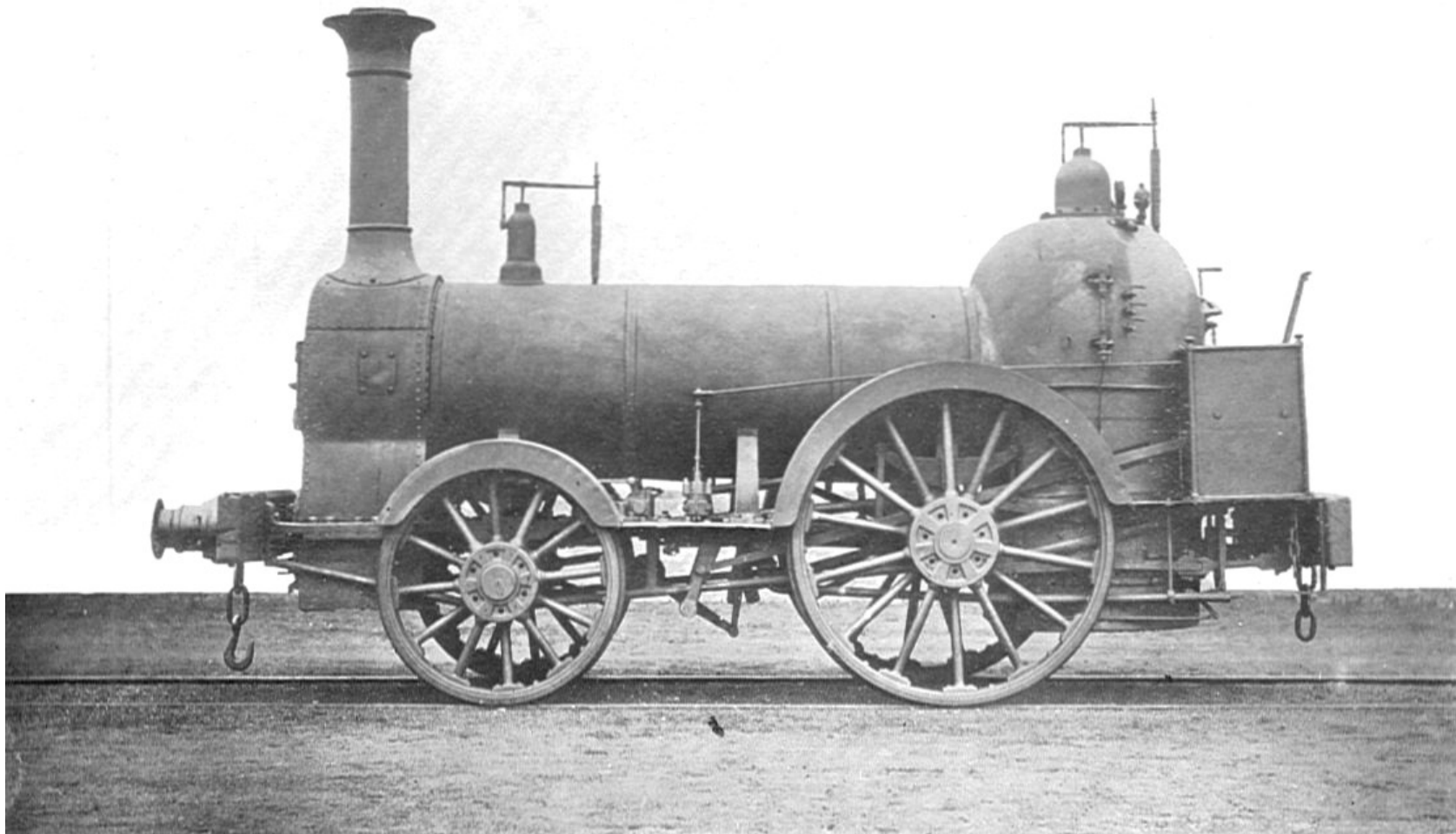
# Major George Washington Whistler 1800-1849

- West Point, graduated 1819
  - Assistant Professor of Drawing 1821-2
  - Resigned from Army in 1833
- Studied railroads in England 1828 w/ Ross Winans\* et al
- Helped design the B&O w/ BiL William Gibbs McNeill
- Said to have introduced the steam whistle to American locomotives (how appropriate!)
- \* FiL of GWW Jr., inventor of the friction wheel with outside bearings; held many patents, died 1877 a rich man (\$20MM)
- 1830s several other railroads, and Lowell steam engines
- <https://www.asce.org/templates/person-bio-detail.aspx?id=11231>

# Patent Application for Ross Winans Crab Engine

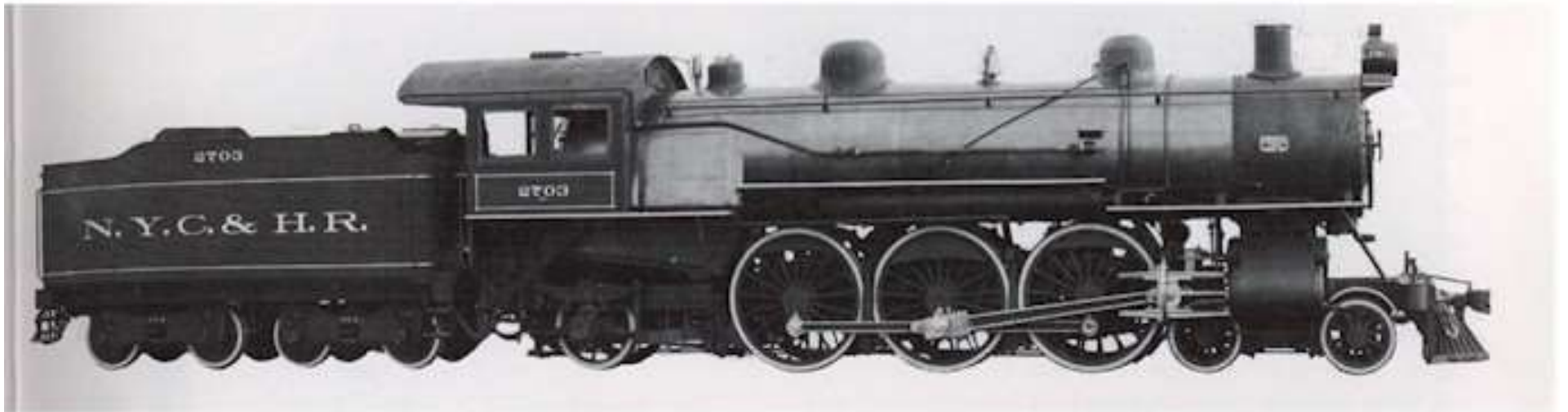


# *Planet* type 2-2-0



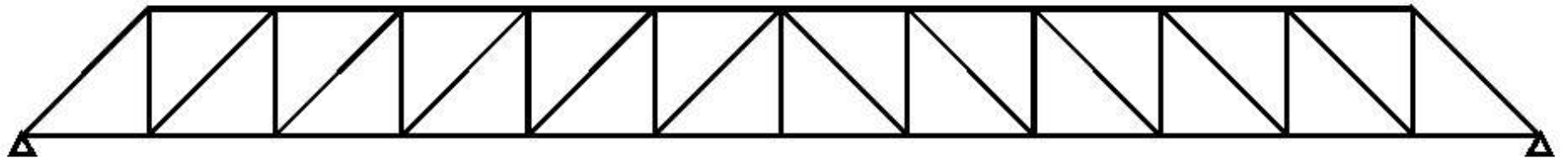


# “Pacific-type” locomotive

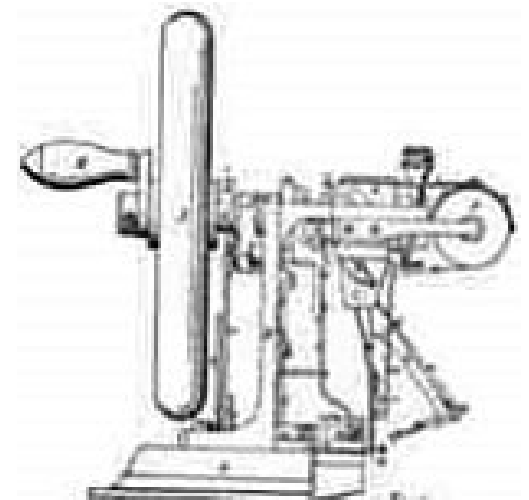
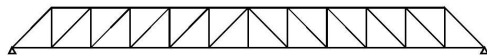


# Howe Truss

- William Howe patented his bridge truss in 1840
- Elias Howe patented lock-stitch sewing machine in 1846, idea stolen by Isaac Singer
- Lying down on the job, Tyler Howe patented the box spring in 1855



# Howe did they do it?









# Double Arch





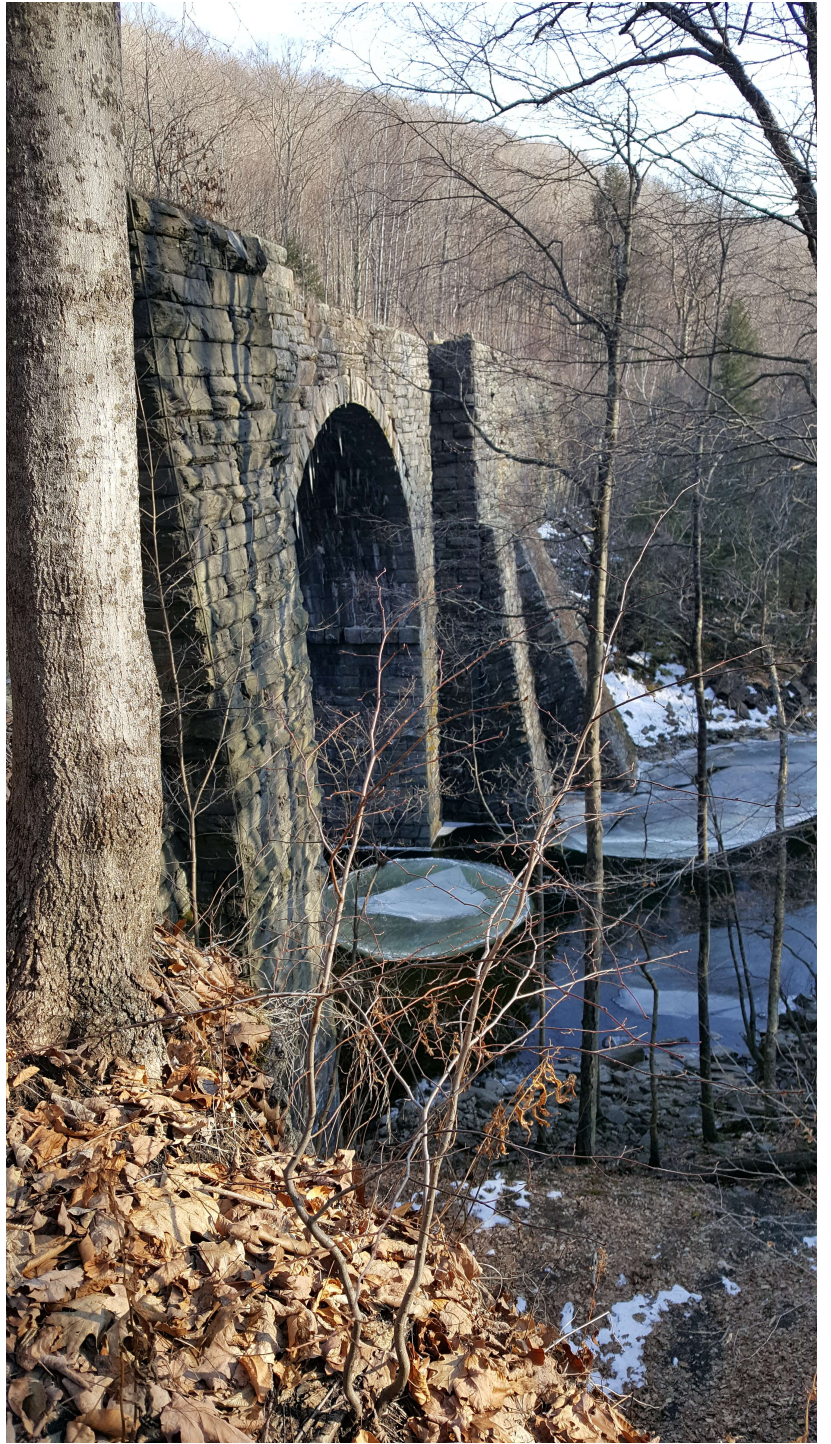




# Don MacGillis admires the cut









# Rare Ice Circle





Contact Dave Pierce  
[dpiercedlp@aol.com](mailto:dpiercedlp@aol.com)



# End of Keystone Arch presentation

Following is a review of the other 5 properties we explored in this course,

and some other follow-on bits of information that attempt to address some of the comments and questions that came up in earlier classes.

# Conversations lead to deeper connections between descendants

(Third of 3 Eagle articles on the Mohicans)

**Retired Stockbridge Police Chief Rick Wilcox walks around the Indian Burying Ground after clearing away sticks and brush. Wilcox has a generations-long relationship with the Mohican Nation Stockbridge-Munsee Band, and he keeps an eye on their burial ground in Stockbridge.**

ELODIE REED - EAGLE CORRESPONDENT

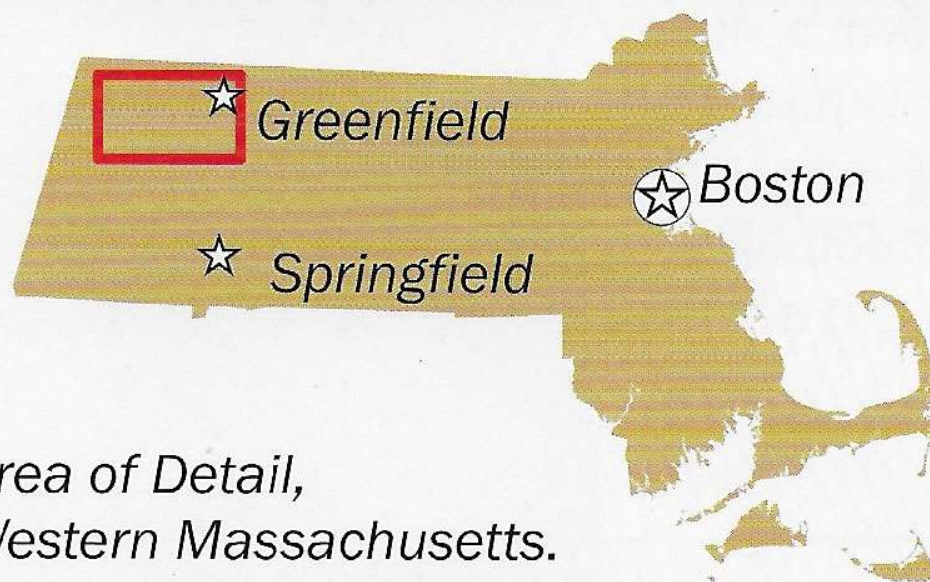
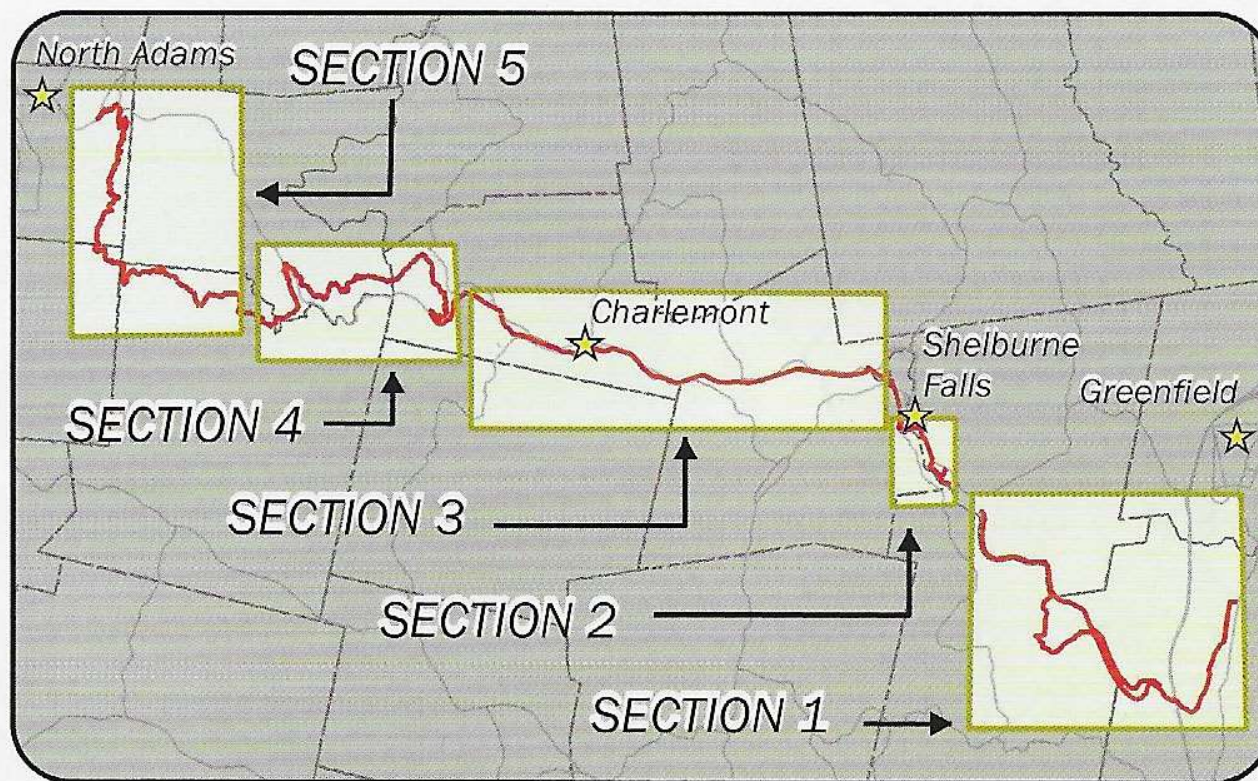






# Maps and other info on:

- Mahican-Mohawk Trail
- Laurel Hill Association trails in Stockbridge
- The Bidwell House Museum
- Alford Springs
- Parsons Marsh

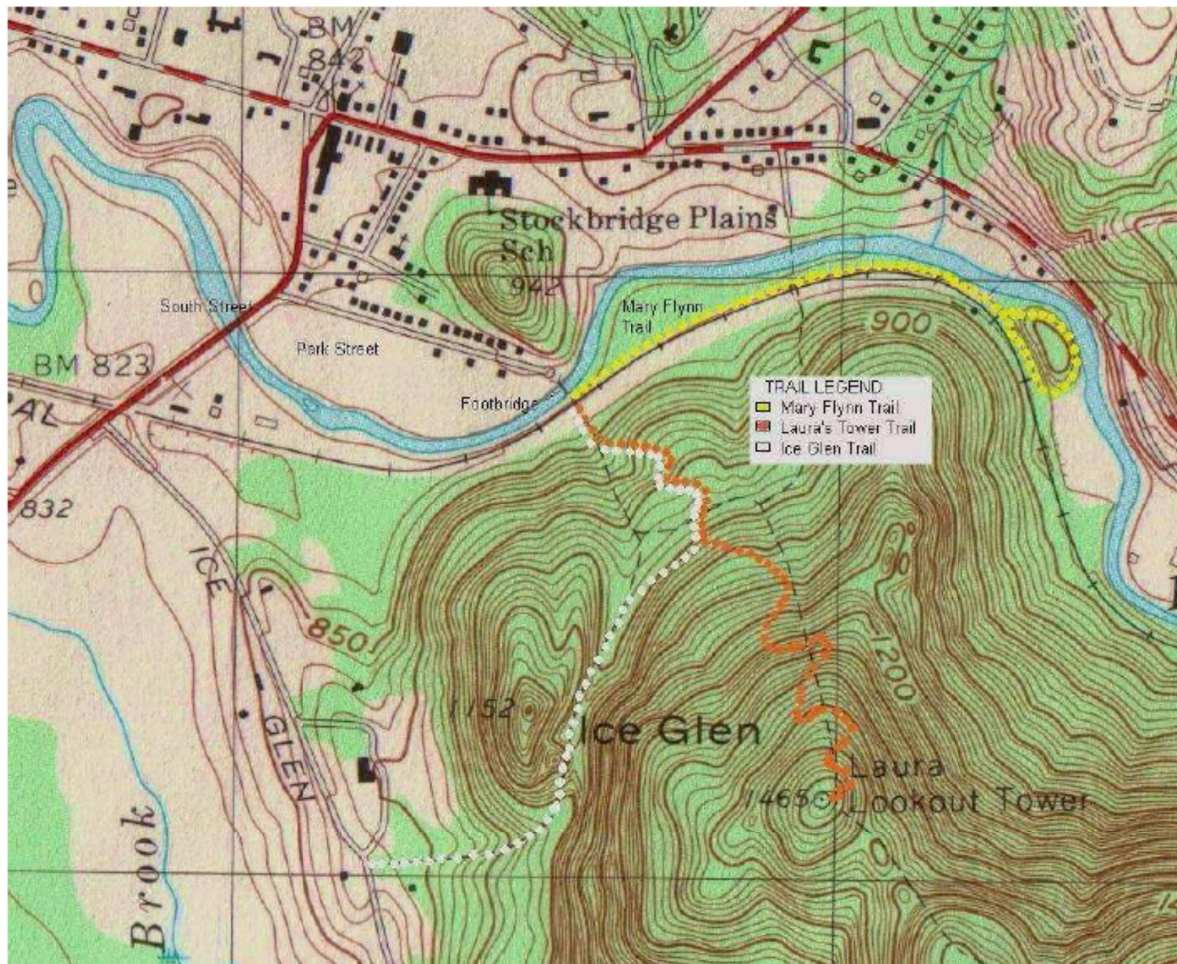


Area of Detail,  
Western Massachusetts.

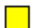




## TRAIL MAP

All three trails start after crossing the Goodrich Memorial footbridge, located at the end of Park Street.



### TRAIL LEGEND

Yellow		Mary V. Flynn Trail
Orange		Laura's Tower Trail
White		Ice Glen Trail

## THREE TRAILS

Maintained by the  
**LAUREL HILL ASSOCIATION**  
Stockbridge, Massachusetts



### THE MARY V. FLYNN TRAIL

### LAURA'S TOWER TRAIL

### ICE GLEN TRAIL

The Laurel Hill Association is the  
nation's oldest village improvement  
society, founded in 1853 by  
Mary Hopkins Goodrich.

To become a member, or to donate  
toward the maintenance of these trails,  
please contact:

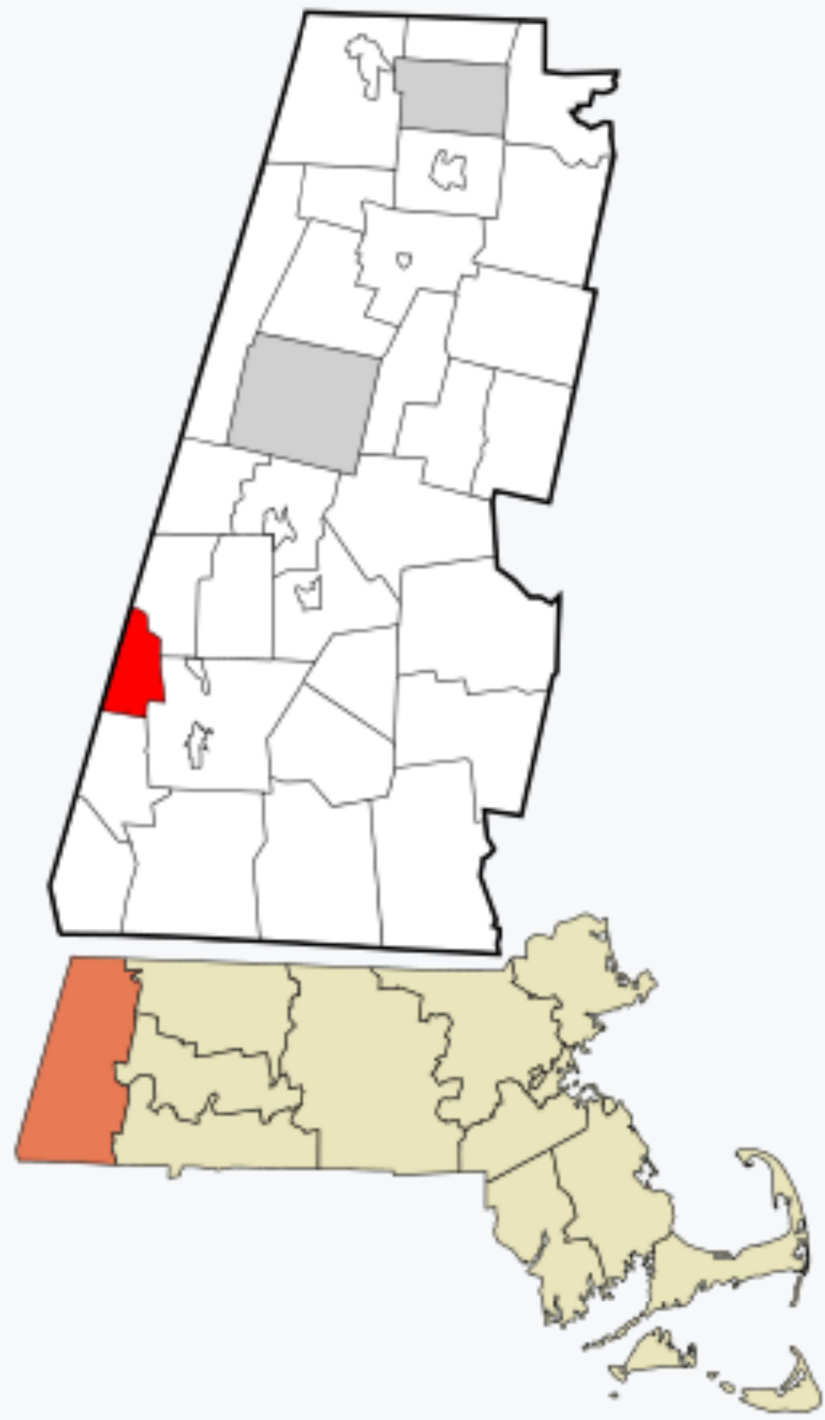
*The Laurel Hill Association*  
P. O. Box 24  
Stockbridge MA 01262



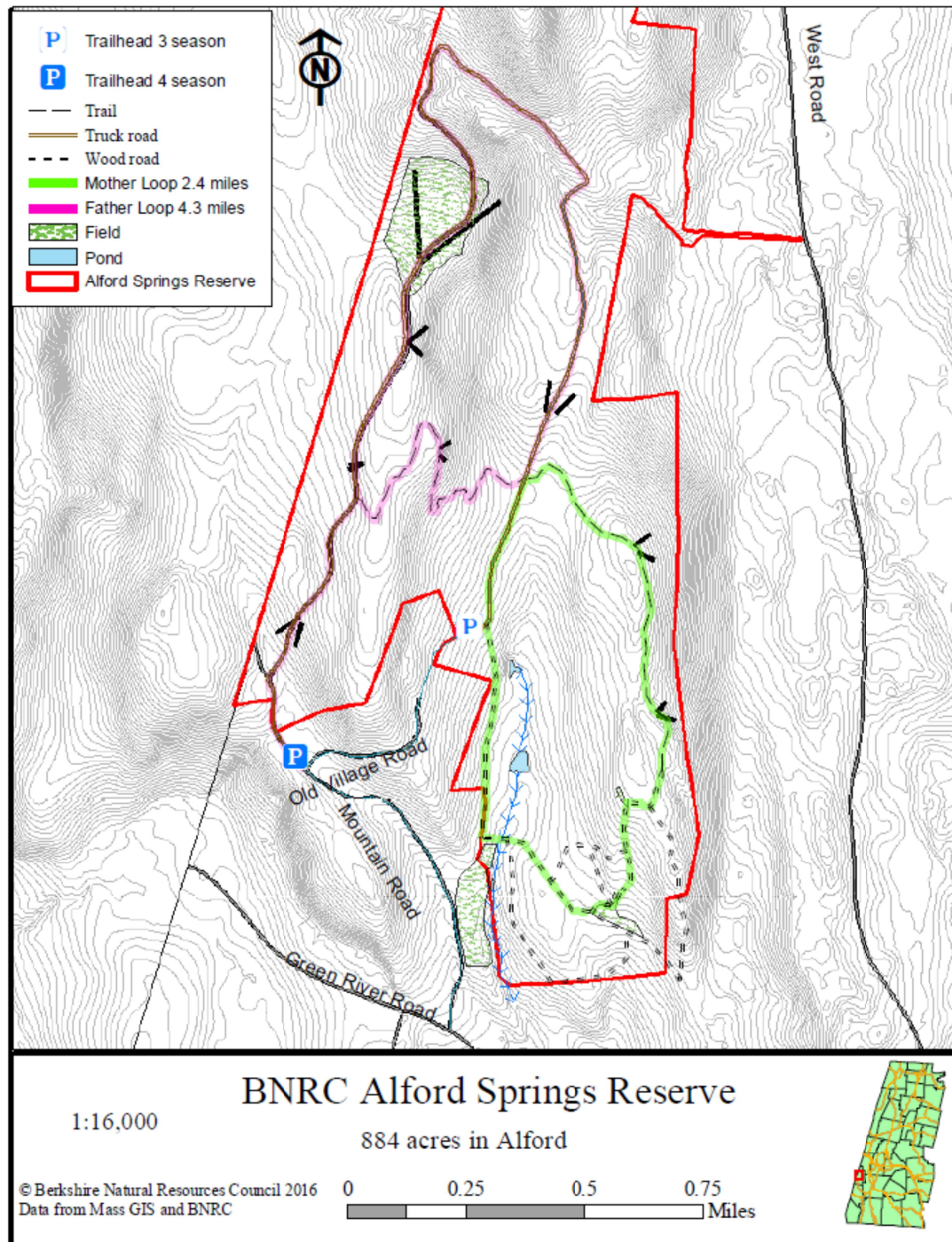
## THE BIDWELL HOUSE MUSEUM TRAIL MAP

- TRAIL MAP KEY**
- TRAILHEAD KIOSK** (Icon: Kiosk)
  - INTERPRETIVE EXHIBIT** (Icon: Triangle)
  - 1 MEETING HOUSE TRAIL (TRAILHEAD)** - 3/4 MILE LOOP
  - 2 STONE WALL LOOP** - 3/4 MILE LOOP OFF MEETING HOUSE TRAIL
  - 3 CAIRN TRAIL** - 50 YARD SIDE TRAIL
  - 4 CELLAR HOLE TRAIL** - 200 YARD SIDE TRAIL
  - 5 BARN LOOP - 200 YARD LOOP**
  - 6 ROYAL HEMLOCK TRAIL (TRAILHEAD)** - 1/2 MILE EACH WAY
  - 7 TURKEYBUSH TRAIL (TRAILHEAD)** - 3/4 MILE TO ROYAL HEMLOCK TRAIL
  - 8 CHAMPION OAK TRAIL** - 1/10 MILE EACH WAY
  - 9 SUGARBUSH TRAIL** - 1/4 MILE, OFF ROYAL HEMLOCK TRAIL













Mass State Plane Projection

1:2,000

© Berkshire Natural Resources Council 2016

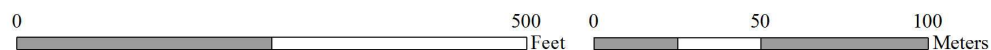
Data from Mass GIS and BNRC

Not to be used for conveyance.

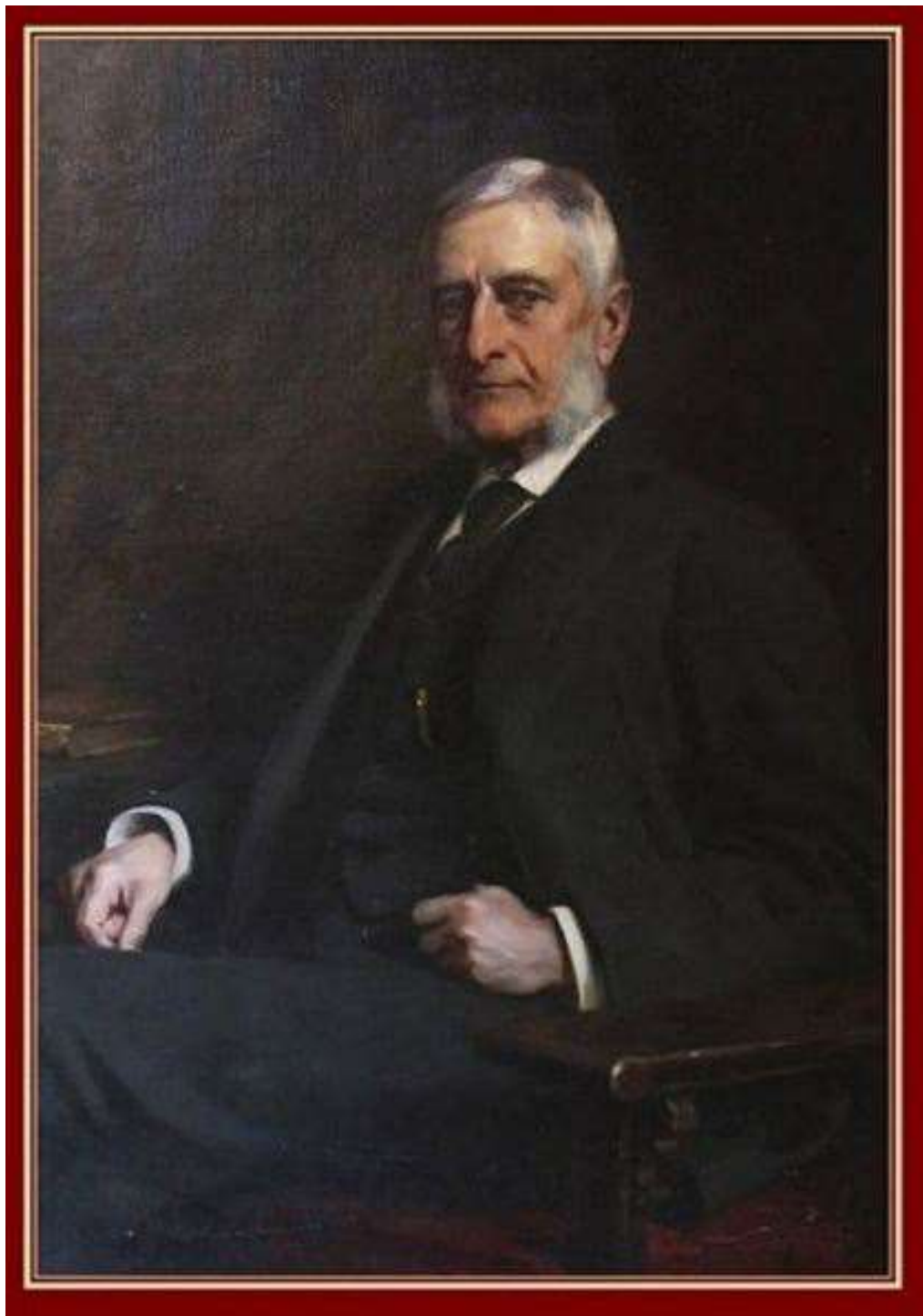
**PRELIMINARY Parsons Marsh Trail Layout: 10/26/2016**

**Berkshire Natural Resources Council**

**Lenox Community Preservation Fund Application**

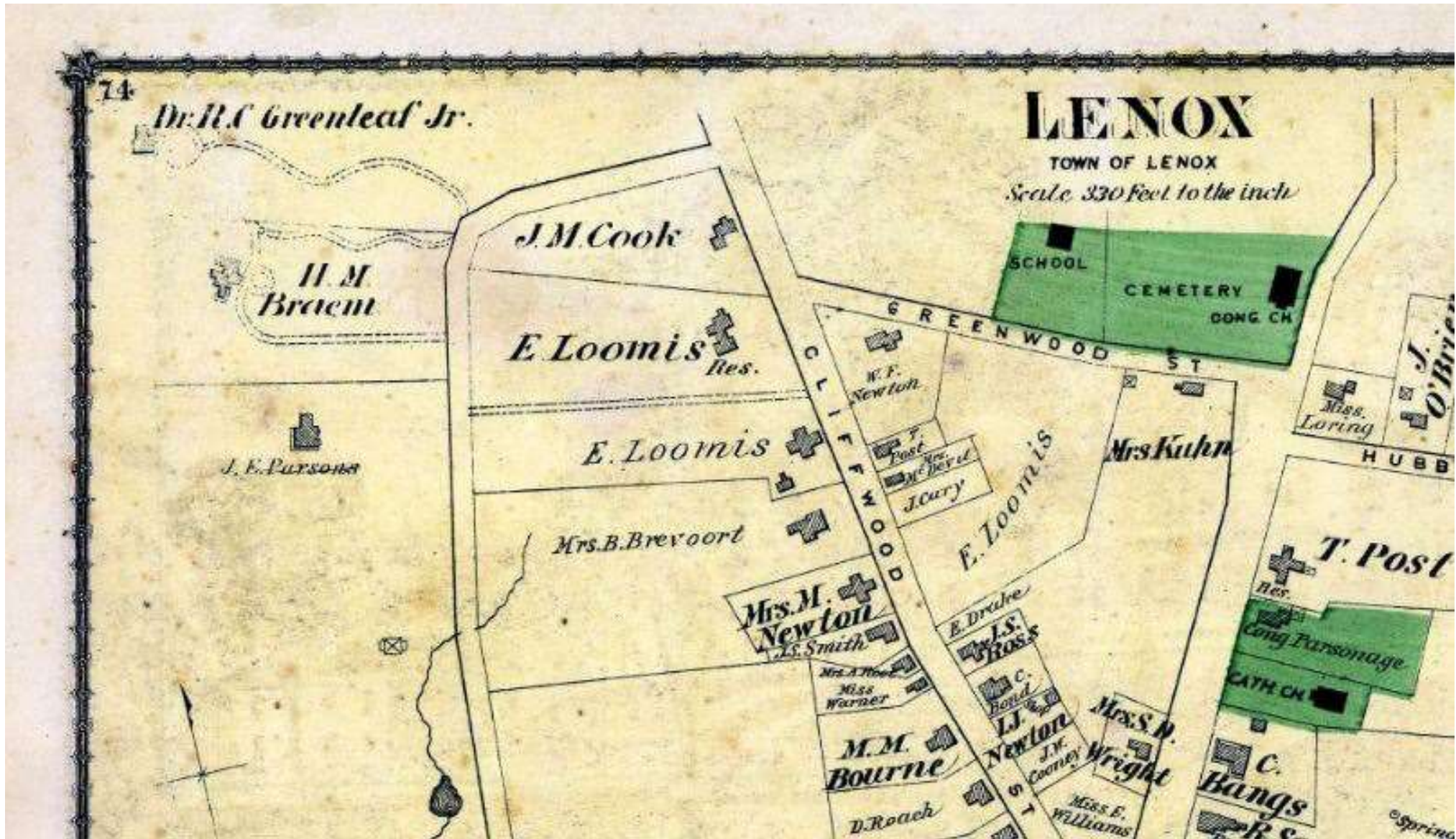






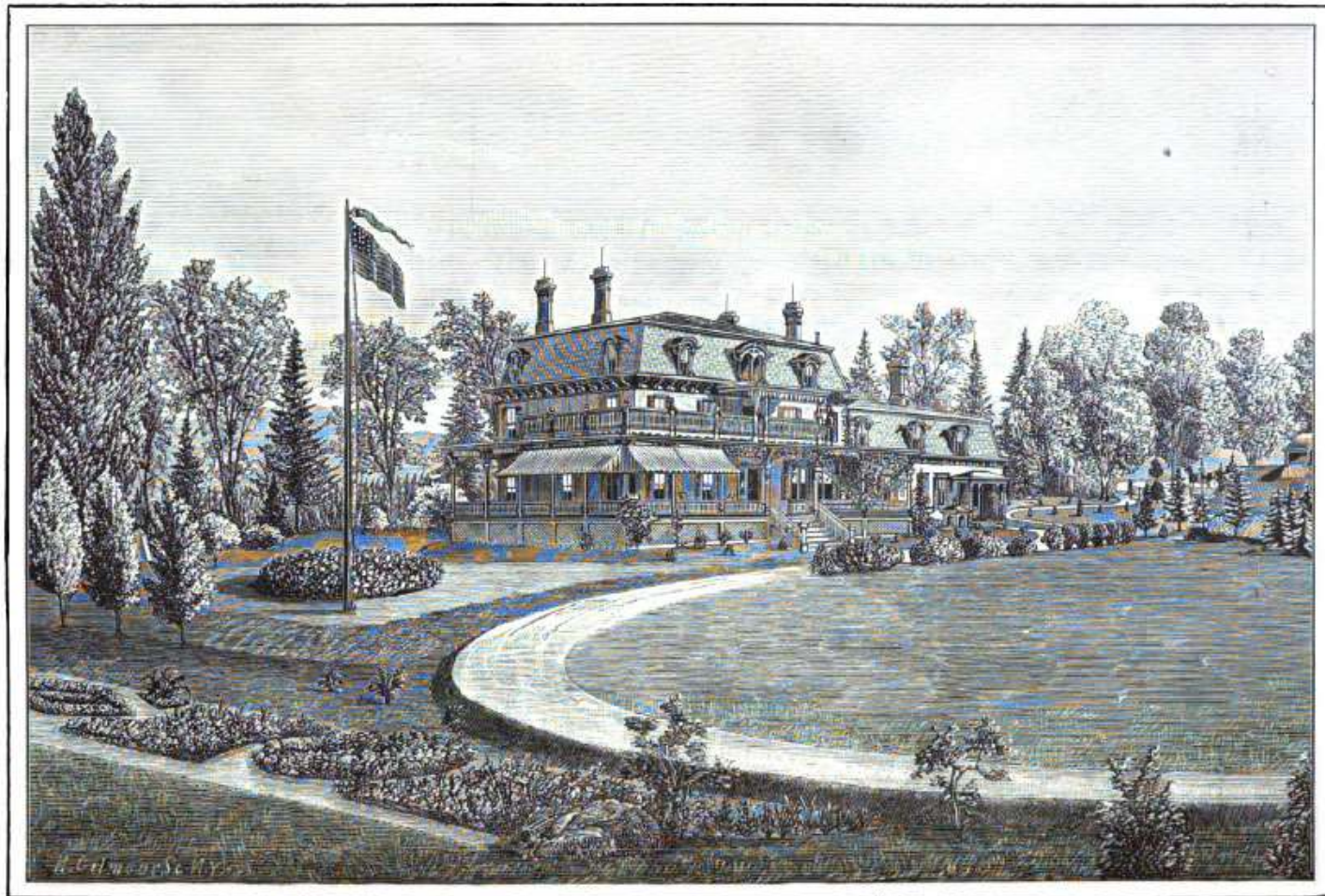


# 1876 Map





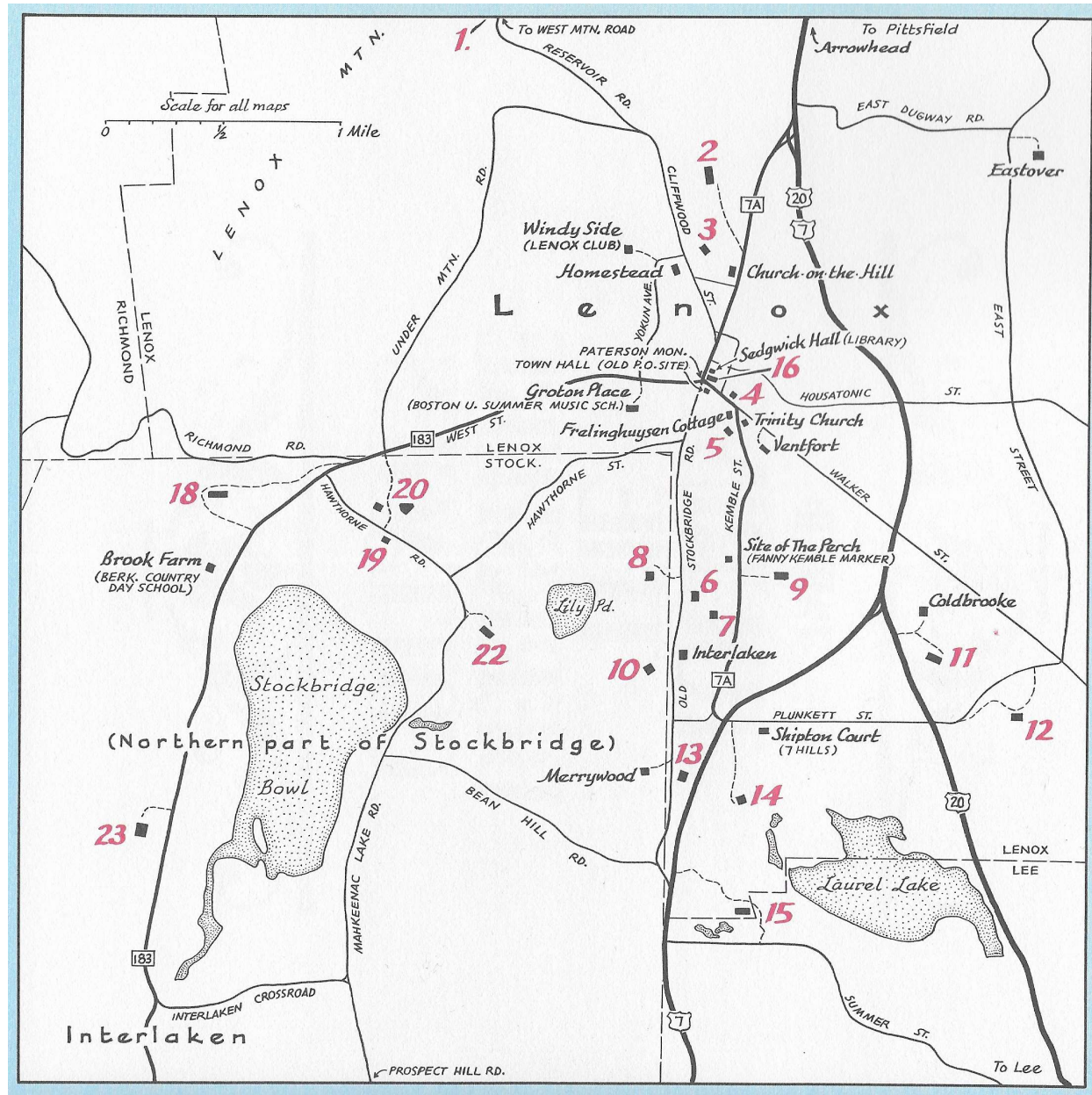
In 1901, the widower Parsons married into more money, in the person of the widow Mrs. David Wolfe Bishop, who owned another of the cottages nearby, Interlaken. She was fifty, he was seventy.

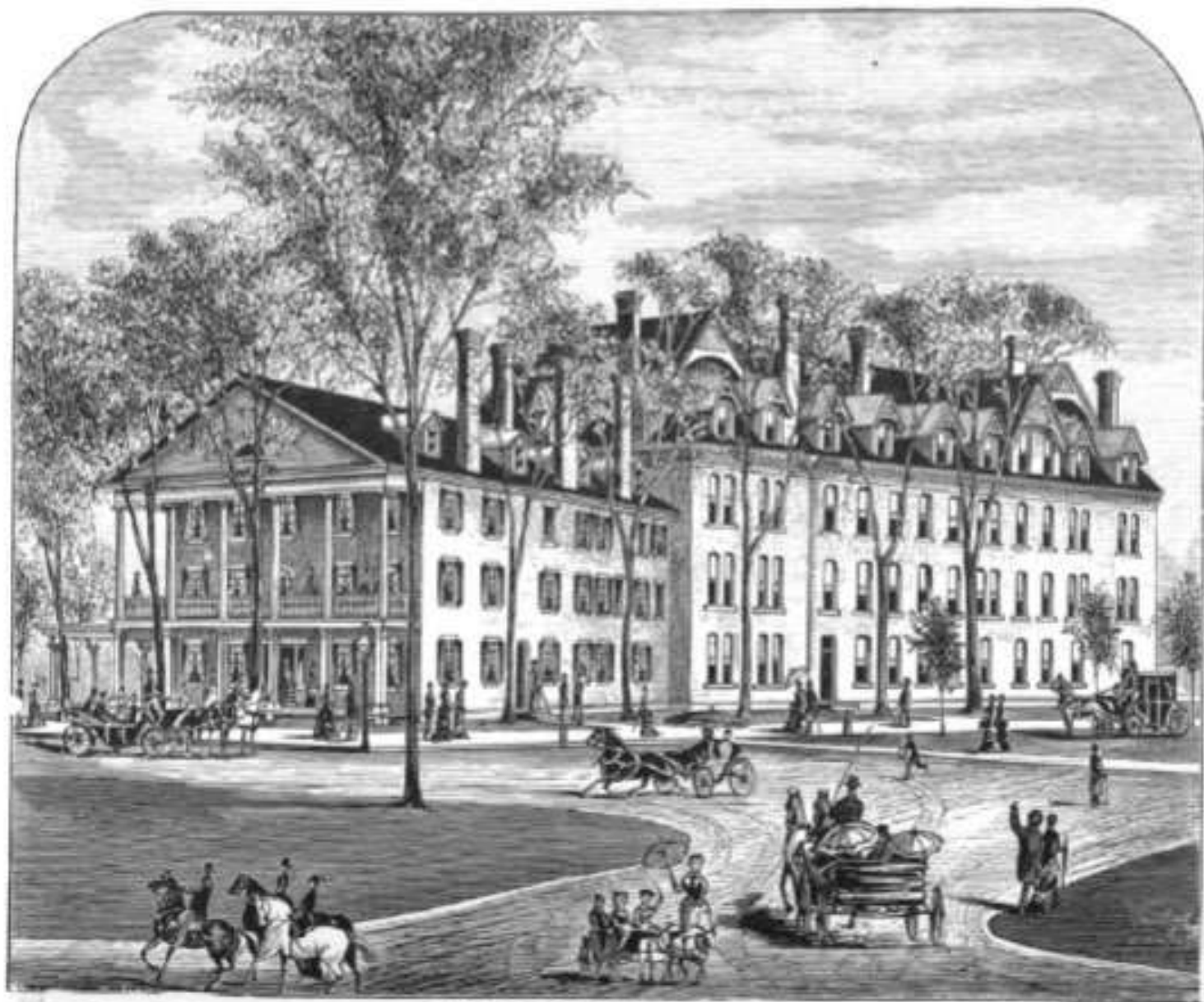


INTERLACKEN.  
RESIDENCE OF DAVID W. BISHOP,  
1901.



Interlaken (the cottage) was located in Lenox across the street from [10] Elm Court (which is in Stockbridge). The section of Stockbridge known as Interlaken (see lower left) was formerly called Curtisville (until 1902).





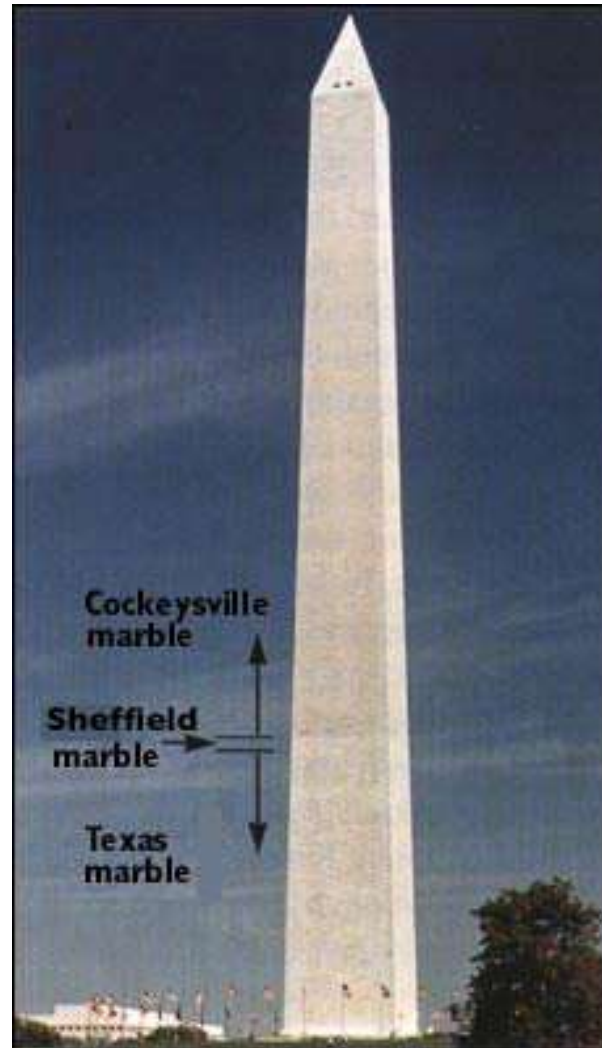
W. O. CURTIS, Propr.

CURTIS HOTEL,  
LENOX.



The first 152 feet of the monument, built between 1848 and 1854, is faced with marble from Texas, Md. Work stopped when funds ran out. When construction was about to resume in 1876, the builders discovered that the foundations were inadequate and the monument was sinking and tilting. To stabilize and straighten the monument, wider subfoundations were constructed to a depth of nearly 37 feet.

In 1879 work began again on the upward projection of the monument, and four courses or rows of white marble from Sheffield, Mass., were laid above the Texas marble.



Marble from Lee, Mass., was also used in the two wings of the Capitol built in the mid - 1850's.

*U.S. Geological Survey*

*<https://pubs.usgs.gov/gip/stones/stones4.html>*



# Thank You!

Oneewe! (Mohican) Anushiik! (Munsee)

- Class Participation
- Muhheconneok [Muh-he-con-neok – People of the Waters that are Never Still]
- Rob Hoogs, Board President, Bidwell House
- Mariah Auman, BNRC Outreach Coordinator
- My Brother Rick, Richard Bidwell Wilcox
- My Grandmother, Grace Bidwell Wilcox
- Many, many other friends and strangers, past and present, who made all of this possible